

WHERE



MICE



S



NICE



# AT A GLANCE

AMERON

BERLIN  
ABION SPREEBOGEN WATERSIDE

Althoff Hotels



BOLLE'S KÜCHE

GEKOCHTE EVENTKUNST

BOLLE  
Festsäle



- Historical event venue & 4-star hotel in the center of Berlin
- 12 meeting rooms for up to 750 guests
- 243 hotel rooms and suites with free wlan and air condition
- Good connections to the main train station, trade fair, airport and motorways
- Public underground car park

# ENTRÉE & KONTORFOYER

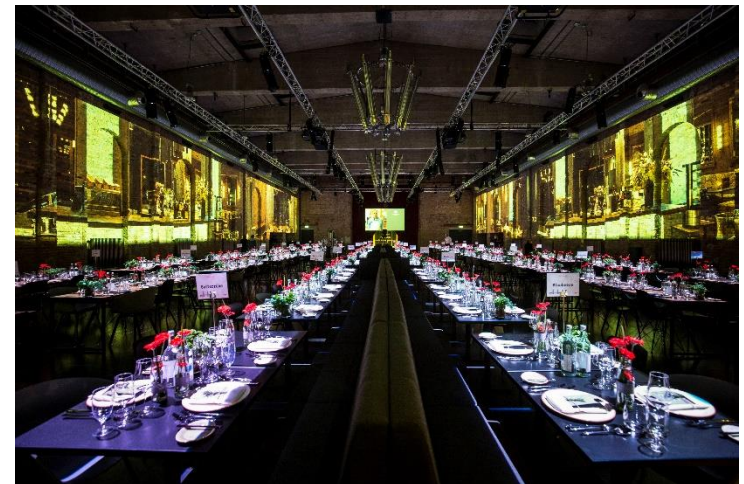
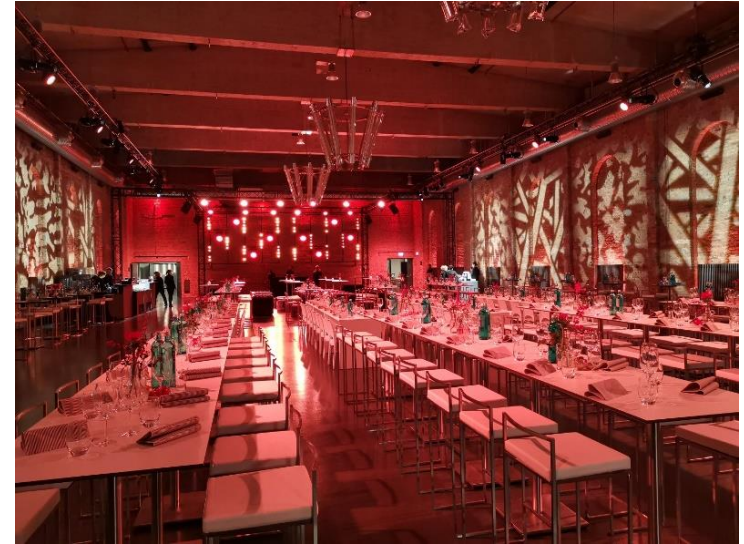
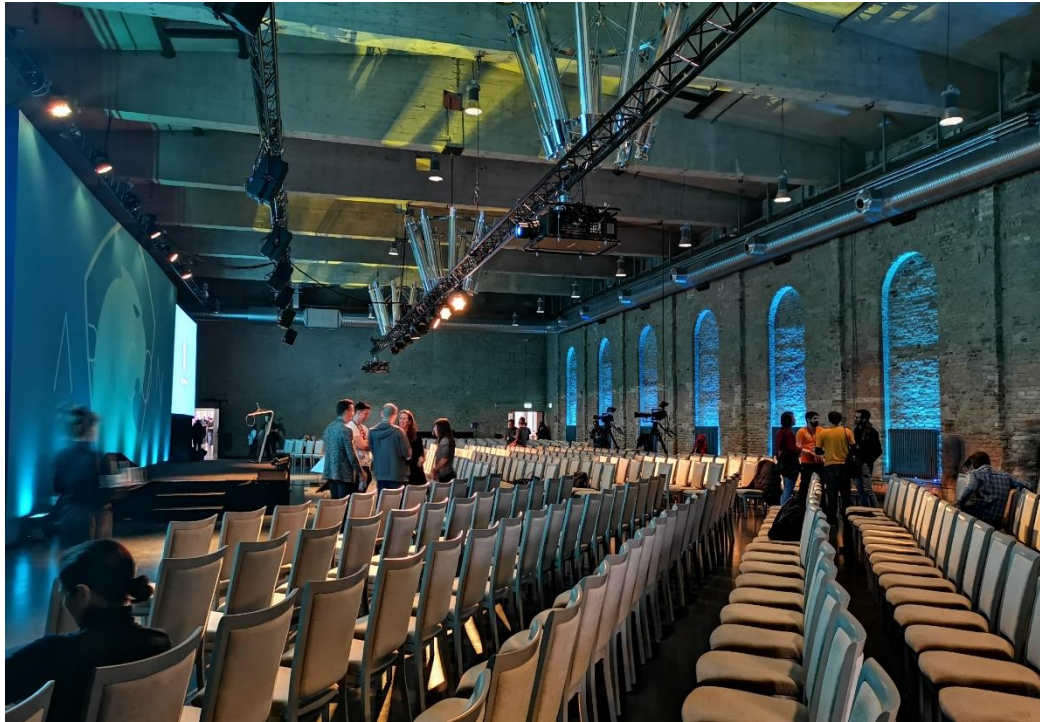


- Entrance area with 30sqm
- Wlan, ambient light, heating
- Indoor and outdoor branding possibilities

- 165sqm foyer for the cloakroom and accreditation area
- 3 Kontor rooms à 23sqm for organisation offices, smaller workshops etc.
- Wlan, heating, ambient light, industrial design furniture



# KAPELLE



- 720sqm (40 x 18m), 7,20m ceiling height
- Former factory chapel of the Carl Bolle dairy
- Bare brick walls, unsupported concrete ceiling, industrial design chandeliers
- Wlan, heating, ventilation system, ambient light, rigging points, high-voltage current, technical device for bringing in cars
- Equipment for dinners and conferences available

# FESTSAAL



- 800sqm (42 x 18m), 5,70m Deckenhöhe
- Chandeliers made from sandblasted milk bottles of the Carl Bolle dairy, 5m high industrial windows, original, preserved wooden roof
- Wlan, heating, ventilation system, ambient light, rigging points, high-voltage current, daylight
- Equipment for dinners and conferences available



# MILCHBAR & ROOF TERRACE



- 66sqm (10 x 6,50m)
- Industrial design, Chesterfield seating areas, milking stools, contemporary artworks, original, preserved window facade with view of the Kleiner Tiergarten
- Ambient light, daylight, heating, bar counter, refrigerators, beer dispenser, direct access to the roof terrace

- 120sqm (13,50 x 9m)
- Lounge furniture, bar and bar tables are available
- Ambient light
- 180 degree view over Berlin



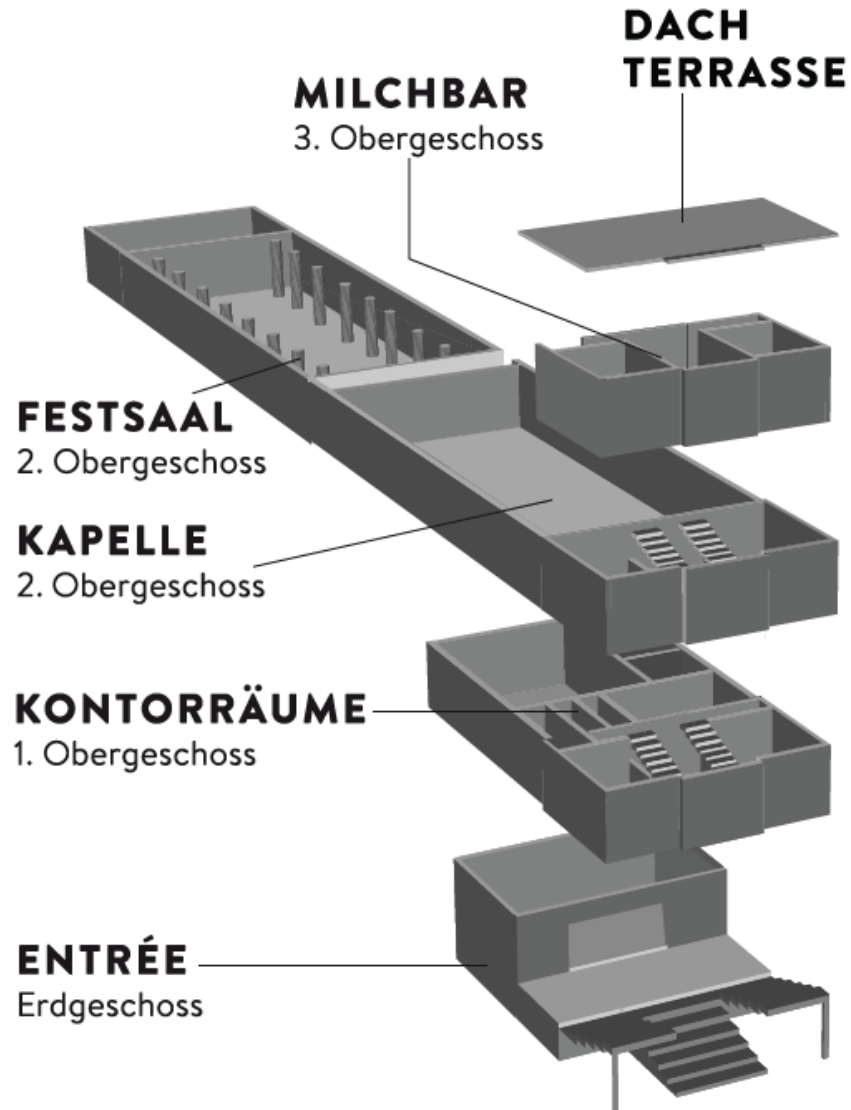
# 3D PLAN

AMERON

BERLIN  
ABION SPREEBOGEN WATERSIDE

Athoff Hotels

**BOLLE**  
Festsäle



# CAPACITIES



LOCATION	RECEPTION	THEATRE	CLASSROOM	RECTANGULAR	BANQUET	MIX	AREA (M <sup>2</sup> )
KAPELLE	600	650	480	500	400	400	720
FESTSAAL	500	400	300	510	400	500	800
KONTORFOYER	80	50				30	165
KONTORRÄUME 1-3						je 16	je 23
MILCHBAR	40					30	66
DACHTERRASSE	70					50	120

\* Maximum capacity depends on the room concept (stage size, technology, catering area)

# PREFERRED PARTNER



Bolles Köche  
Corinna Kunger  
+49 30 / 39 92 0791  
[bolleskoeche@bolle-meierei.com](mailto:bolleskoeche@bolle-meierei.com)



PHOENIX.berlin GmbH  
Björn Arnold  
+49 30 / 814 510 24  
[B.Arnold@phoenix.berlin](mailto:B.Arnold@phoenix.berlin)



btl next GmbH  
Tobias Thele  
+49 30 / 53 018 8 300  
[tobias.thele@btl-x.de](mailto:tobias.thele@btl-x.de)

For the overall implementation of your event, we highly recommend to work with our preferred partners [Bolles Köche](#) for catering, [PHOENIX.berlin](#) for furnishing, and [btl Next GmbH](#) for event engineering. All of our partners are very familiar with the venue and have successfully organized numerous events here.

There is no partner commitment.

In case you decide to work with an external catering supplier, we will have to charge additional costs for the use of our kitchen.

More partners:

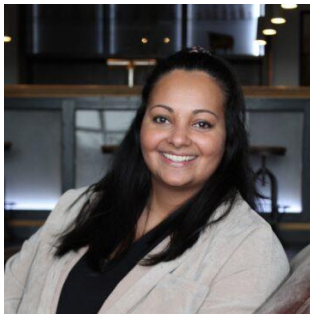


# CONTACT

## **BOLLE Festsäle**

BT der EFA Gastronomie GmbH & Co. KG  
Alt-Moabit 98  
10559 Berlin

Fon +49 30 21480100  
[info@bolle-meierei.com](mailto:info@bolle-meierei.com)  
[www.bolle-meierei.com](http://www.bolle-meierei.com)



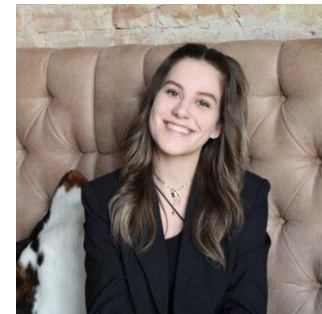
Sheila Ghaffar  
Head of Venue & Event

Fon: +49 30 2148010 12  
[ghaffar@bolle-meierei.com](mailto:ghaffar@bolle-meierei.com)



Philipp Kunz  
Senior Manager Location &  
Event

Fon: +49 30 2148010 10  
[kunz@bolle-meierei.com](mailto:kunz@bolle-meierei.com)



Charline Marschall  
Manager Location & Event

Fon: +49 30 2148010 11  
[marschall@bolle-meierei.com](mailto:marschall@bolle-meierei.com)



We are looking forward to your event!